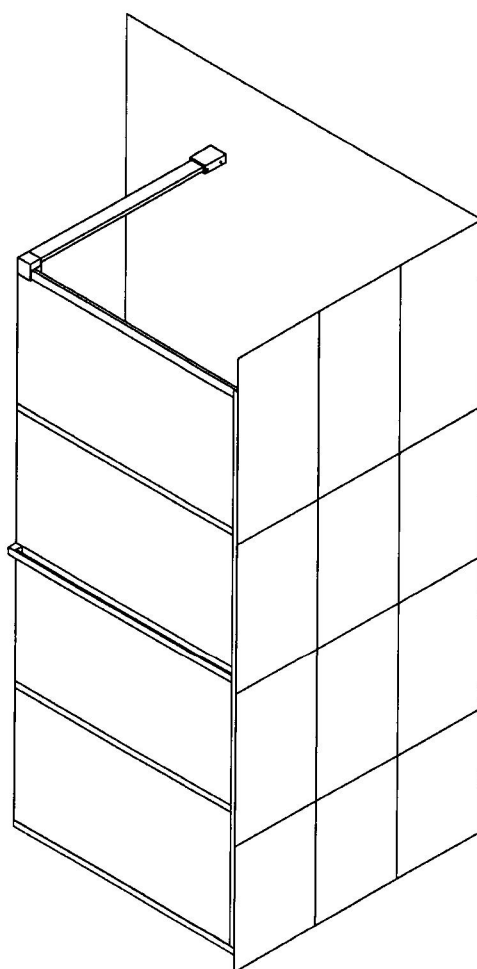


4006550/4006560/4006570/4006580

IMPORTANT

Please read carefully the following instructions before installing your shower enclosure. If you have any questions on this shower enclosure installation - please call your local dealer.

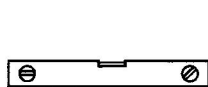


Our product may have changes without prior notice.

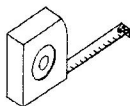
Preparation

2. Please note that you should consult your local building codes on questions on installation compliance standards. Building and plumbing codes vary by location, and your local dealers or distributors are not responsible for code compliance standards for your project.
3. Install all of the required plumbing and drainage before securing the shower. Use a competent and licensed (if required by local code) plumber for all plumbing installation.
4. Please insure that prior to the installation the floor is leveled and solid and will be able to support the total weight of the unit and its occupant. Also make sure the walls are at right angles. While some adjustment in leveling of the tray is possible, irregular floor level or improper angle of side walls will result in serious problems for your installation. Please, note that there are some adjustments and drilling might be necessary during the installation process.

Tools



Level



Tape Measure



Pencil



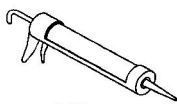
Phillips Screwdriver



Drill bit (Ø=8mm)



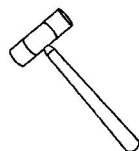
Drill bit (Ø=3.2mm)



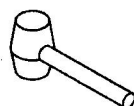
Silicone



Power Drill



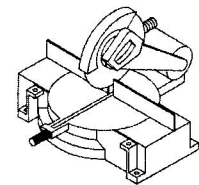
Soft Head Hammer



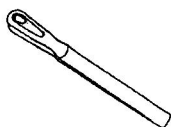
Mallet



Wood

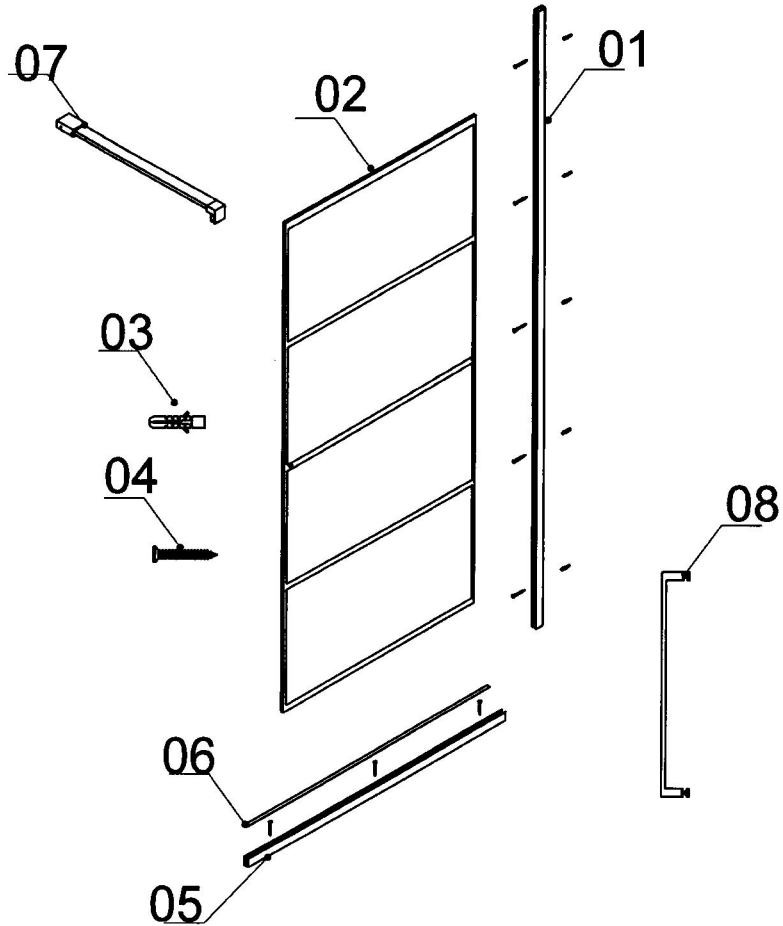


Miter saw or Hacksaw



Metal File

Detailed Diagram of shower door components



Parts List

Part#	Description	Qty	Part#	Description	Qty
01	U-channel 1 (wall profile)	1pc	05	U-channel 2 (bottom profile)	1pc
02	Stationary glass	1pc	06	0.5mm Adjustment Spacer x900/1000	1pc
03	Ø8 Wall anchor	8pcs	07	Support bar	1pc
04	Countersunk screw ST4.2x40	8pcs	08	Handle	1pc

Installation steps

In-Line Stationary Panel Installation

1. Trim the 0.5mm Adjustment spacer (#06) into several 50mm pieces. Insert three to four 50mm pieces of the 0.5mm adjustment spacers (#06) into the U-channel 2 (#05) (bottom profile). These are used as setting blocks to protect the bottom edge of the glass.

- Slip the **U-channel 2 (#05) (bottom profile)** and **U-channel 1 (#01) (wall profile)** onto the **Stationary glass (#02)** as shown.
- Place the **Stationary glass (#02)** with the **U-channels 1 & 2** onto the threshold (Fig 1.2).
- Adjust the **Stationary glass (#02)** and **U-channel 1 (#01) (wall profile)** against the wall to compensate for any out of plumb conditions, (not to exceed 13mm) ensuring that the **Stationary glass (#02)** is level vertically (plumb) and **U-channel 1 (#01)** is tight to the wall.
- Make certain that your bottom channel is parallel to the outside of your threshold. Use a level while adjusting your glass to verify that it is plumb.

See Fig. 1 for details

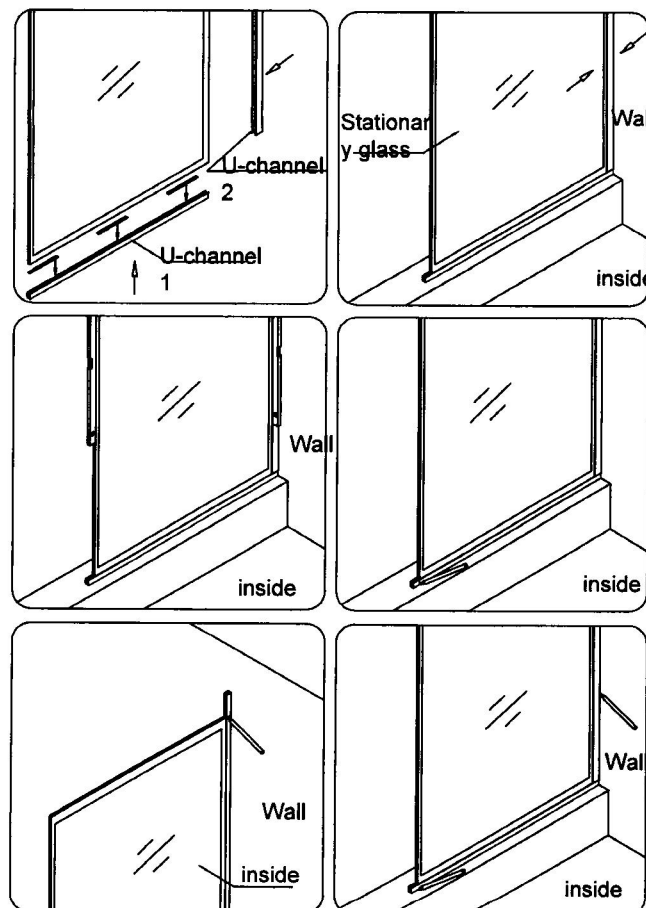


Fig 1

2. Mark the end of the U-channel 2 (#05) (bottom profile) opposite of the wall at the exposed vertical glass edge.

- Mark the top of **U-channel 1 (#01) (wall profile)** flush with the top of the glass (Fig 1.4).
- Mark the position of both u-channels on the wall and threshold from inside the shower area (Fig 1.6).

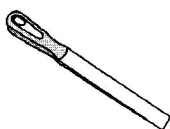
See Fig. 1 for details

NOTE: Additional **0.5mm Adjustment spacers (#06)** can be used in the bottom u-channel (up to 6.3 max) to assist in leveling the glass.

3. Remove the U-channel 2 (#05) (bottom profile) and the U-channel 1 (#01) (wall profile) and carefully set the Stationary glass (#02) aside.

- Cut the **U-channel 2 (#05) (bottom profile)** and the **U-channel 1 (#01) (wall profile)** to marked lengths.
- Use a metal file to remove any burrs from the cut ends and eliminate any stray metal shavings from the u-channels before placing them onto the glass.

See Fig 2 for details



Metal File

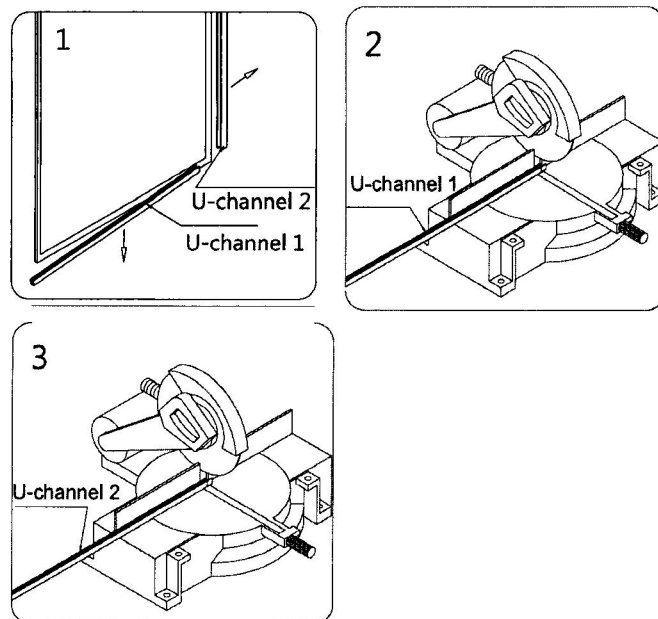


Fig 2

4. Position the U-channel 2 (#05) (bottom profile) onto the threshold along your line and mark the position of the holes for drilling. Use at least 3 holes for the U-channel 2 (#05) (bottom profile): one near each end and one near the center.

- Drill the holes into the threshold using an **Ø3.2mm** drill bit.
- Apply a bead of silicone to the bottom of the **U-channel 2 (#05) (bottom profile)** and attach it to the threshold using the **ST4.2 x 40mm screws (#04)**.

See Fig 3 for details

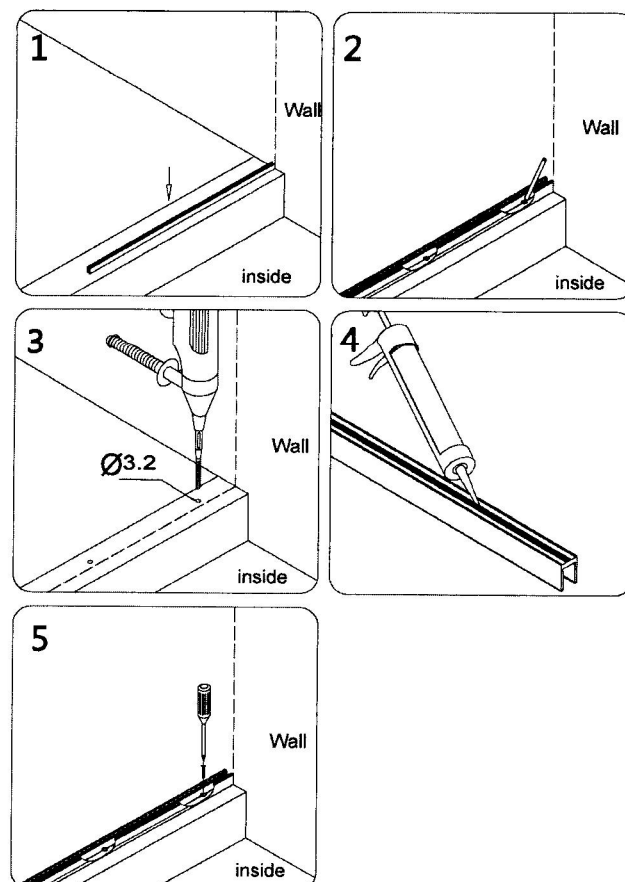


Fig 3

NOTE: If installing into a tile threshold, drill **Ø8** holes and insert anchors.

5. Next, position the **U-channel 1 (#01) (wall profile)** along the vertical line on the wall and mark the position of the holes for drilling. Use at least four holes for the **U-channel 1 (#01) (wall profile)**.

- Drill the holes into the wall using a **Ø8** drill bit.
- Insert the **Wall anchors (#03)** into the 8mm holes.
- Apply silicone to the back of the **U-channel 1 (#01) (wall profile)** and attach it to the wall using the **ST4.2 x 40mm screws (#04)**.

See Fig 4 for details

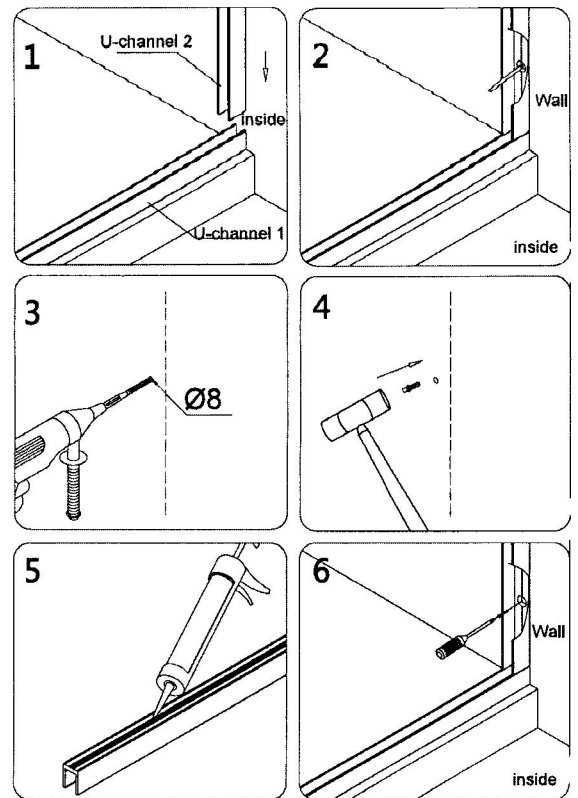


Fig 4

6. Apply good quality mildew resistant silicone into both u-channels.

- Add the **0.5mm Adjustment spacers (#06)** from step#2 into to **U-channel 2 (#05) (bottom profile)** (Fig 5.3)
- Install the **Stationary glass (#02)** into **U-channel 2 (#05) (bottom profile)** and the **U-channel 1 (#01) (wall profile)**. You may gently tap on the glass using a block of wood and a mallet. Do Not hit the corner of the glass panel. Apply silicone to the exposed ends of the U-channel (Fig. 5.6)

See Fig 5 for details

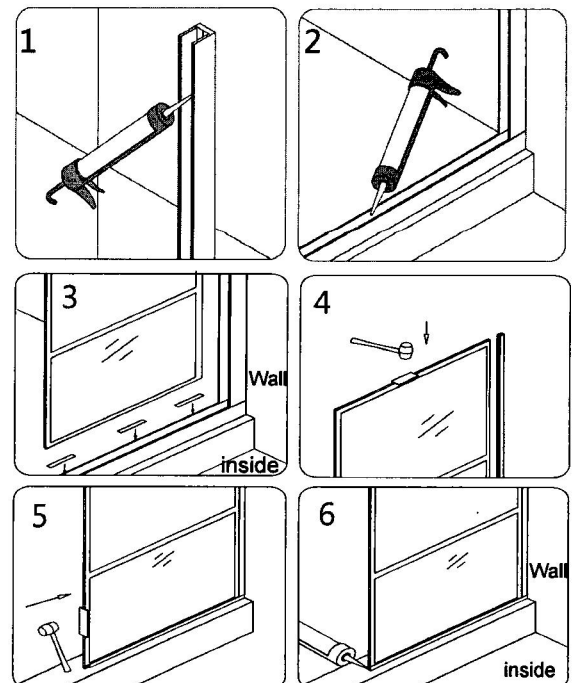
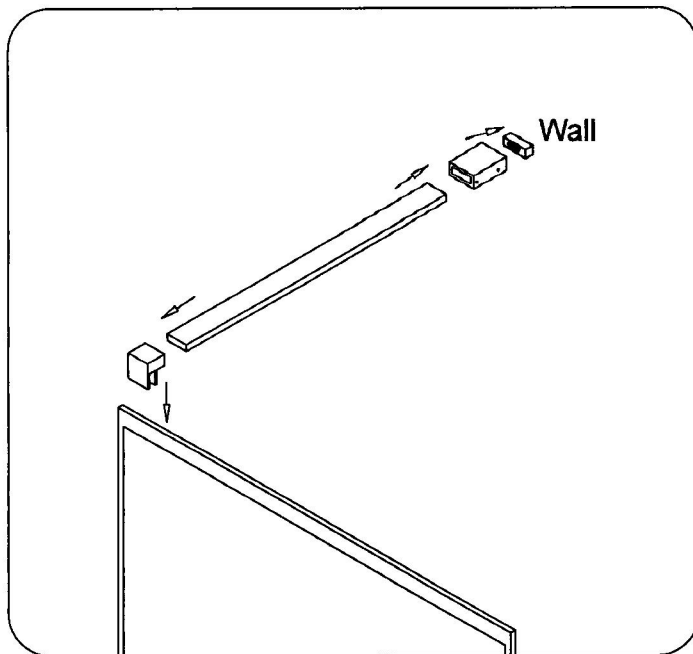
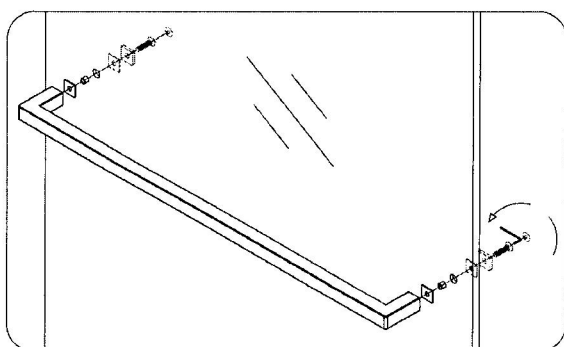


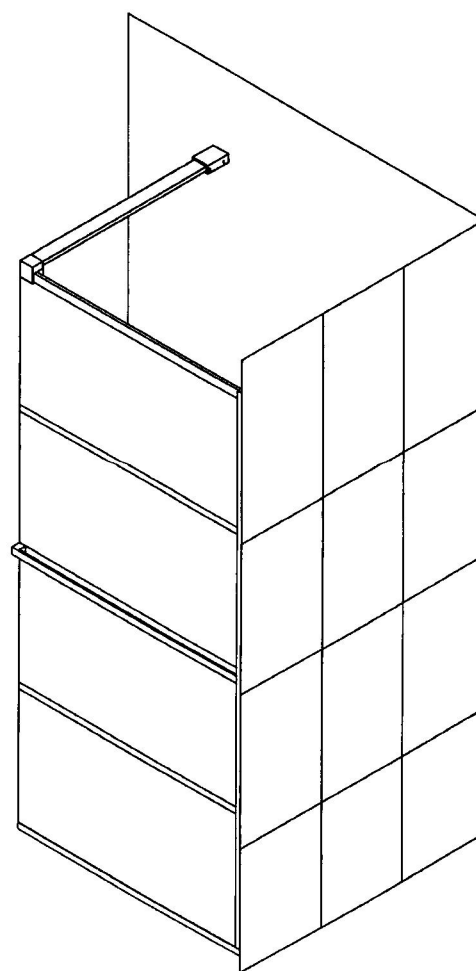
Fig 5



Install the Support bar as shown



Install the handle as shown



7. Apply a good quality mildew resistant silicone along the U-channel where it meets the wall and threshold from inside of the shower. You may also apply silicone along the outside if desired.

Allow 24 hours for the silicone to fully cure before using the shower.

See Fig 6 for details

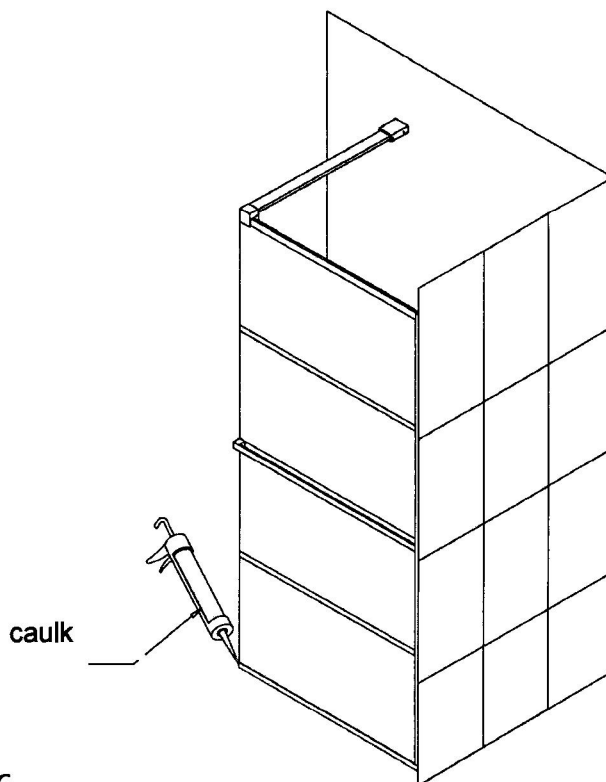
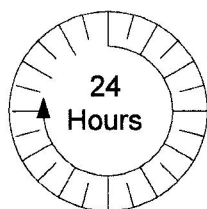


Fig 6

Product Maintenance

GLASS: To ensure long lasting life for your glass shower products: wipe them off after each use with a soft cloth. Rinse and wipe off the glass using either a soft cloth or a squeegee to prevent soap buildup and water spots (Hard water can etch the surface of the glass over time if left to dry). To prevent scratching the surface: never use abrasive cleaners or cleaning products that contain scouring agents. Never use bristle brushes or abrasive sponges that may scratch the surface.

HARDWARE: To ensure a long lasting finish: wipe off the metal parts after each use with a soft cloth. Do not use abrasive cleaners or cleaning products containing ammonia, bleach or acid. If accidentally used, rinse the surface as soon as possible to prevent damage to the finish (peeling or corrosion). After cleaning the polished finishes, rinse thoroughly and wipe dry with soft cloth. Clean stainless steel surfaces at least once a week. When applying stainless steel cleaner or polish to stainless steel hardware, work with (not across) the grain. Never use an abrasive sponge or cloth, steel wool or wired brush as these may permanently scratch the surfaces.